

SYM[®]
NAVAL

MOTOR WORK BOAT

OIL TANKER - TM

TM-083-23

Barcelona · Miami · Santo Domingo



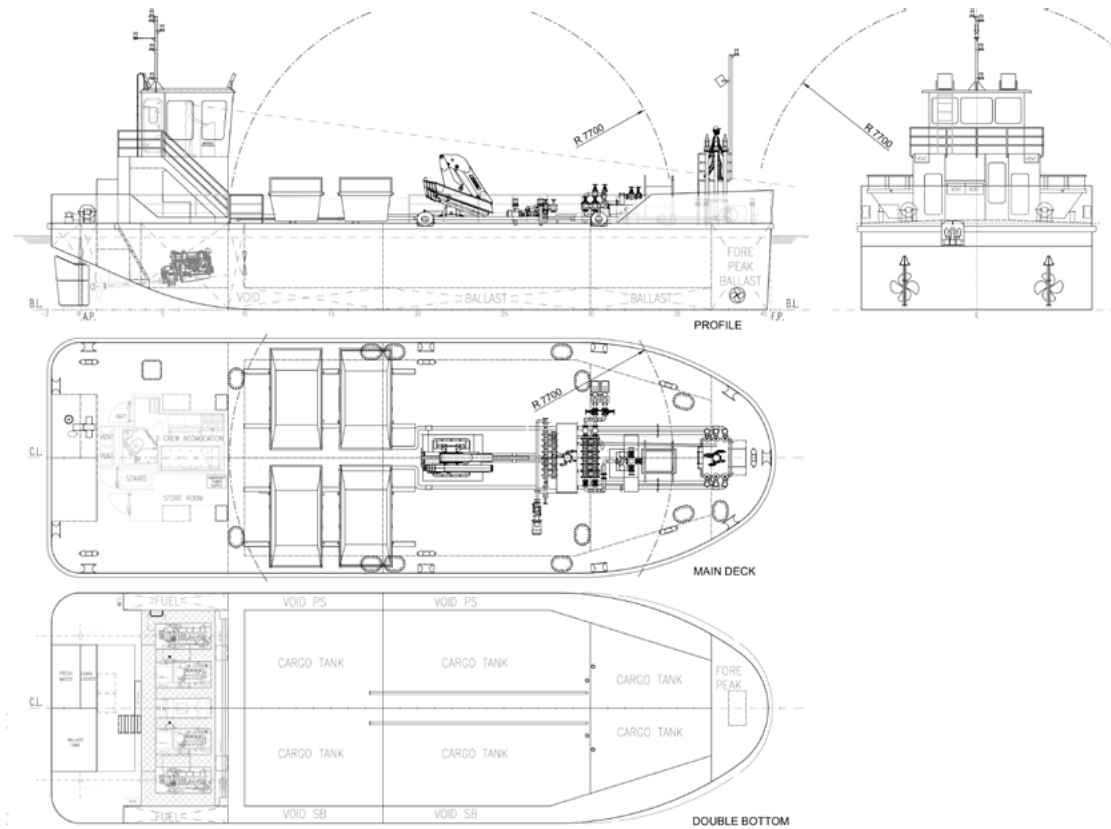
BUREAU VERITAS, : + HULL-MACHINERY,
OIL TANKER, FLASH POINT < 60°,
SHELTERED WATERS

MAIN CHARACTERISTICS

L.O.A.	25,15 m
BEAM	8 m
DRAUGHT	2,43 m
POWER	2 x 360 hp
SPEED	6,5 kn
MARPOL I, IV, VI (FP <60)	220 m ³ (95%)
MARPOL V CAPACITY	30 m ³
CARGO PUMP CAPACITY	40 m ³ /h

OIL TANKER TM-083-23

GENERAL ARRANGEMENT



TECHNICAL SPECIFICATION

CHARACTERISTICS

MAIN DIMENSIONS:

L.O.A.	25,15 m
L.B.P.	23,96 m
BEAM	8 m
DRAUGHT	2,43 m
DEPTH	3 m

CLASSIFICATION NOTES

CLASS NOTATION	Bureau Veritas, : + HULL·MACHINERY, Oil Tanker, Flash Point < 60°, Sheltred Waters
SPANISH FLAG	Grupo III, Clase S
CARGO TYPE	Marpol I, IV, V, VI

CARGO SYSTEM

CARGO PUMP MAKER	Trief
CARGO PUMP MODEL	Hydraulic driven BAL 32 R B 600 H
CAPACITY	40 m ³ /H to 20 m ³ /h
PRESSURE	5 Bar
VISCOSITY	50 Cst to 1000 Cst
DENSITY	1 Kg/dm ³

PROPULSION SYSTEM

M.W MAKER	Doosan Intracore Co.
MODEL	L126 TIH with electronic control Aventics Marex ecs 500 and InteliDrive DCU controller
TOTAL POWER	2 X 360 hp at 2,000 r.p.m
TAIL SHAFT	Stainless steel AISI 316L
TAIL SHAFT BEARINGS	Thordon SXL
PROPELLER	2 units, 4 fixed blades diameter 1,070 mm.

GENERAL DATA

STEERING SYSTEM

RUDDER BLADE	2 X high performance rudder blades semi-balanced
RUDDER AREA	2 X 0,9 m ²
RUDDER SHAFT	Stainless steel aisi 316l
RUDDER SHAFT BEARINGS	Thordon zorec

BALLAST SYSTEM

BALLAST PUMP MAKER	Varisco
MODEL	Self priming centrifugal pump js2-120-k10
CAPACITY	44 m ³ /h
BALLAST MANIFOLD	5 X globe valve DN65
BALLAST TANKS	6 Units

AUXILIARY EQUIPMENT

ELECTRICAL ANCHOR WINCH MAKER	Galmac
WINCH MODEL	MOH-14-1-E
ANCHOR CHAIN	14 mm Q2
ANCHOR	240 Kg.

ELECTRICAL SYSTEM

GEN-SET	2 units
ENGINE MAKER	Doosan Infracore Co.
MODEL	AD136TF with intelinano controller
POWER	2 X 145 Hp at 1,500 r.p.m
GENERATOR MAKER	Mecc Alte
MODEL	ECP34-1L4
POWER	2 X 135 Kva, 50 Hz, 400V
3-PH POWER TRANSFORMER	400V-230V, 25 Kva IP23
BATTERY SET	12 X 12 V
ELECTRICAL INSTALLATION	ATEX

GENERAL DATA

COMMUNICATION & NAVIGATION SYSTEM

MAGNETIC COMPASS	Ritchie 80
AIS	EM-Track B-100
CHART PLOTTER WITH ECHO-SOUNDER	Samyung NF100
VHF GMDSS	SPO 507 M
VHF PORTABLE	SPO 36 M

CRANE & DERRICKS

DECK CRANE	Cytecma
CAPACITY	2,5 tonnes at 8 m.

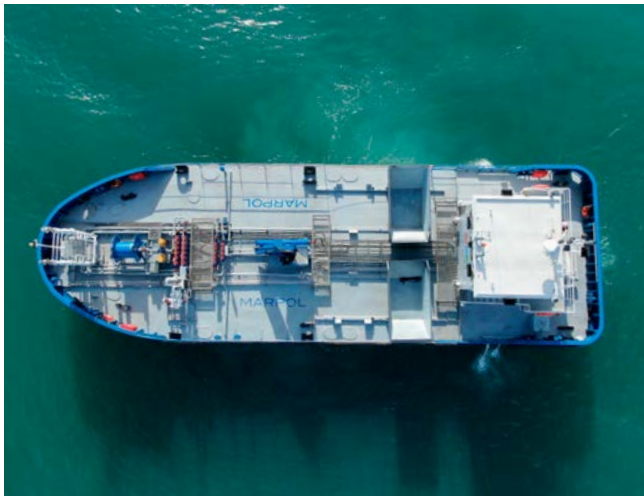
ACCOMODATION

The vessel is equipped with one cabin for 2 pax including 2 beds with complete bathroom, sofa and table.

Workshop facilities including working bench, 380 and 220 V electrical connection.

TANK CAPACITIES

CARGO	220 m ³ (95%)
DIESEL OIL	11 m ³
BALLAST WATER	90 m ³
FRESH WATER	2,17 m ³
BILGE WATER	1,55 m ³
GREY/BLACK WATER	1,55 m ³







OTHER CONSTRUCTIONS



HARBOUR TUG TM-024-02

MOORING V



HARBOUR TUG TM-036-08

ASTERIX



HARBOUR TUG TM-036-08

OBELIX



+34 934 910 450 | +1 849 354 3131 | +34 600 620 981
info@sym-naval.com | www.sym-naval.com



SYM Naval reserves the right to change or update the technical specifications, performance, equipment and/or design of its vessels at any time without prior notice.
This presentation and its content are not legally binding and should be used only for marketing purposes.